

JUL/AUG 2025

NESSP NEWS

Official Newsletter of Northwest Space and Science Pathways



IMPORTANT DATES

- NESSP Professional Development Live Session 1 Dates:
 - Saturday, August 9th, 2025
 - Wednesday, August 20, 2025
 - Saturday, September 6th, 2025
 - Wednesday, September 17th, 2025

HELP US TELL THE NESSP STORY

The end of 2025 marks 10 years of NESSP support through NASA's Science Activation Program. We are deeply grateful for this support and for all the educators, students, and communities we've had the privilege to work with along the way.

This milestone also marks the end of our current NASA award. Because of this, NESSP has decided not to launch a new challenge in the fall and winter of 2025, as we have over the past five years. Instead, we will offer an NGSS-aligned ROADS Companion Course, supported by both virtual and in-person professional development opportunities, along with our Companion Course supply loan program.

NESSP hopes to continue offering annual academic-year challenges in the future. This strategic pause is not the end—it's a moment to regroup and strengthen. Please stay tuned for updates.

If you'd like to help, we invite you to share stories and statements that show how NESSP has made an impact in your schools, communities, organizations, and—especially—on students. You can find more details at the link below.

Share Your NESSP Story and Help Us Show the Impact:
<https://nwessp.org/nessp-impact-stories/>

IN THIS ISSUE

Important dates

Help us Tell the NESSP
Story

Help us Save Lonely Robots

NDiSTEM Conference

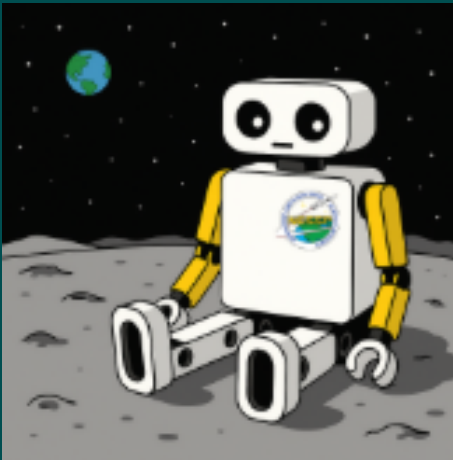
NASA Night Sky Network

Register for ROADS Earth
to Venus Professional
Development

Professional Development
Live Session 1 Dates

HELP US SAVE LONELY ROBOTS BY RETURNING LOANED NESSP SUPPLIES

Do you have NESSP supplies on loan, especially LEGO SPIKE robot kits, that you're not currently using or don't plan to use for a NESSP program like a summer Mini-Mission, next year's Companion Course, or a Professional Development workshop? Or are you changing schools or organizations?



NESSP SUPPLY RETURN FORM
NWESSP.ORG/SUPPLY-RETURN

If so, please return the materials to NESSP HQ so we can get them to another educator who needs them.

We include return shipping labels with all loaned supplies and recommend keeping both the labels and the original packaging. If you can't find your label, you can request a new one using the link to the left.

You'll need the approximate dimensions (length, width, and height) and weight for each box. A return label will be emailed to you in one to two business days.

You're always welcome to register for future NESSP activities and request another supply loan when you're ready. If you're unsure whether to keep or return a kit, feel free to email us at info@nwessp.org. We're happy to help.

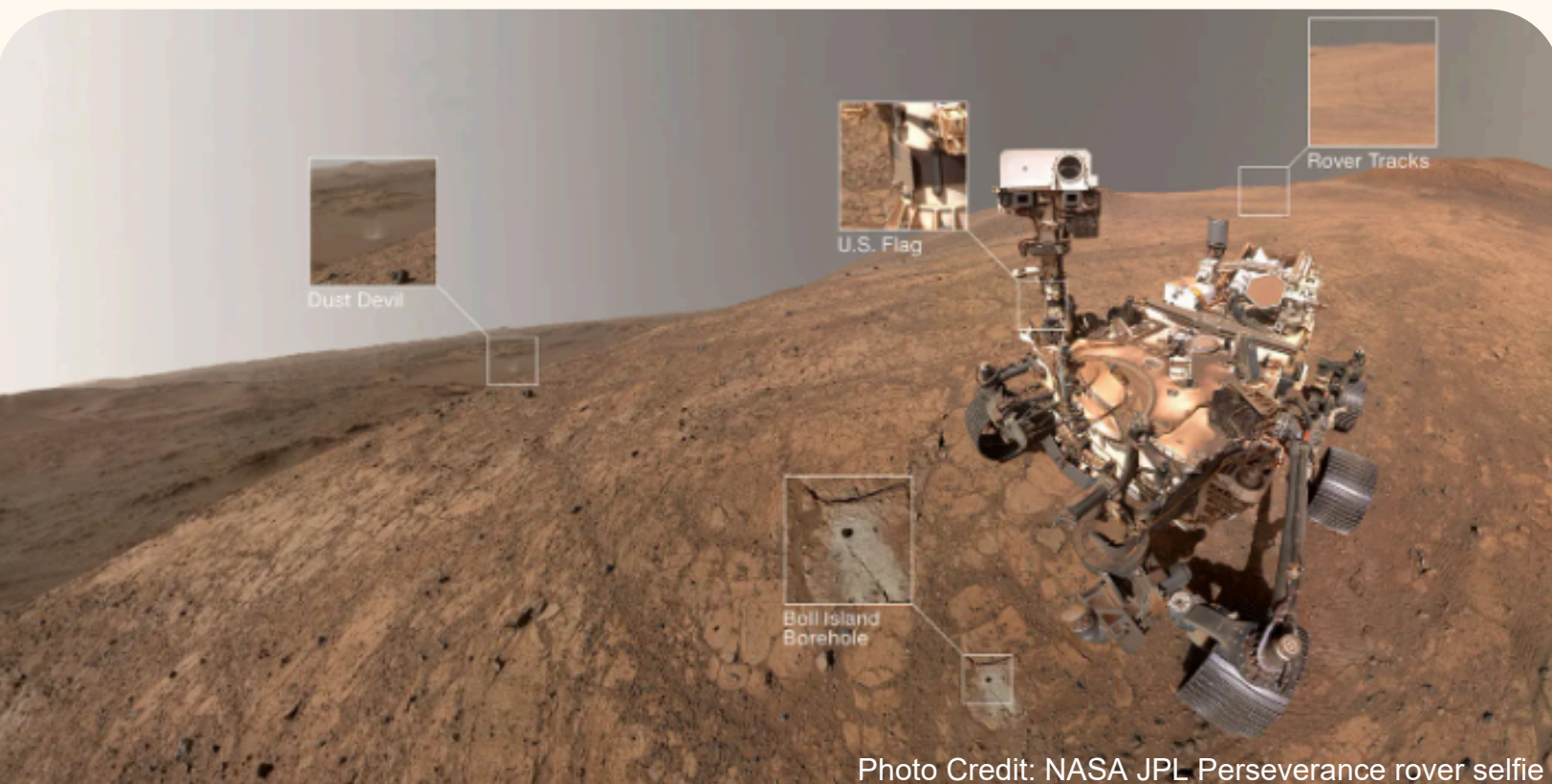


Photo Credit: NASA JPL Perseverance rover selfie

NDiSTEM CONFERENCE OCT 30-NOV 1

NDiSTEM is the largest multidisciplinary and multicultural STEM conference in the country.

Over the course of the event, college-level through professional attendees are immersed in cutting-edge STEM research, professional development sessions, motivational keynote speakers, multicultural celebrations and traditions and more. To

learn more about this amazing opportunity use the link below:

<https://www.sacnas.org/conference>

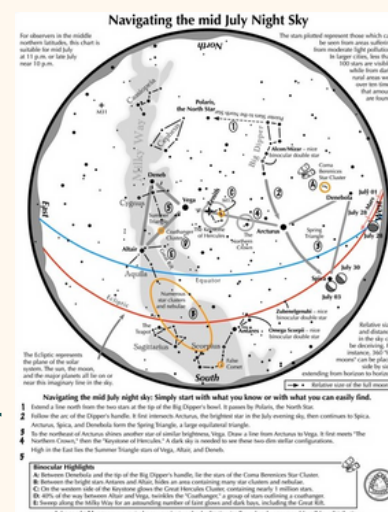


NIGHT SKY NETWORK

The Night Sky Network is a national community of amateur astronomy clubs dedicated to sharing the excitement, science, and innovation behind NASA's missions. Night Sky Network members volunteer their time and telescopes to bring unforgettable stargazing experiences to local museums, schools, observatories, and outdoor events right under the stars.

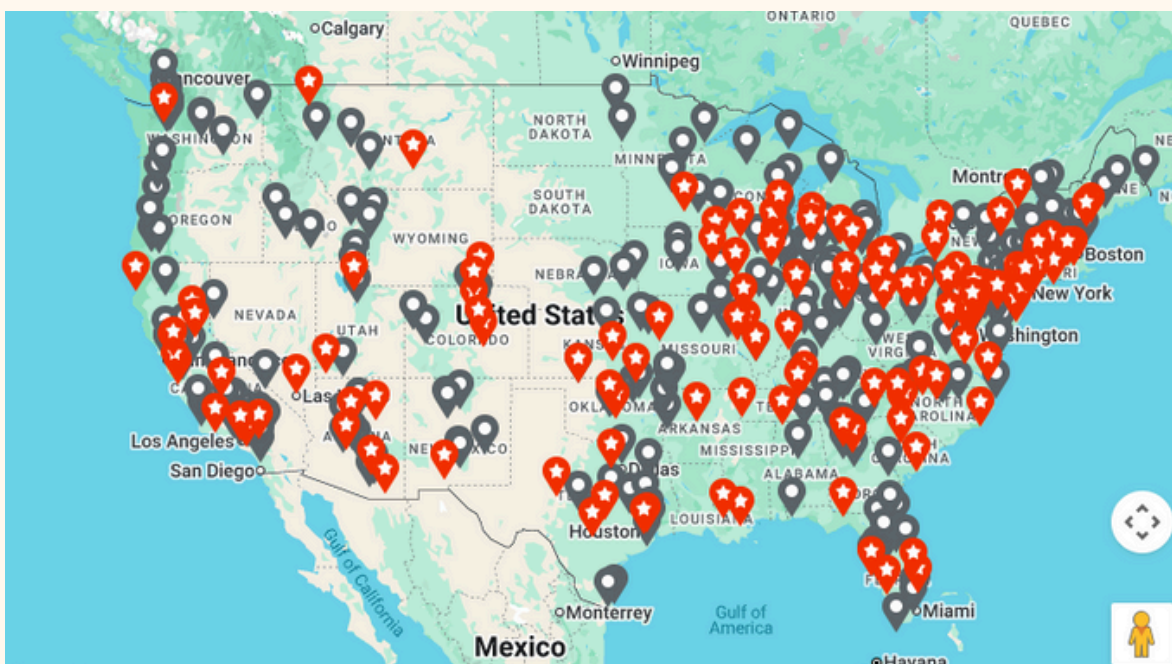
Get Involved!

Looking to explore the night sky, learn more about astronomy, or meet others who share your curiosity? Find and join an astronomy club near you through the Night Sky Network. Whether you're a seasoned stargazer or just getting started, there's a place for you among the stars.



FIND A CLUB NEAR YOU!

<https://nightsky.jpl.nasa.gov/clubs/>



REGISTER FOR ROADS FROM EARTH TO VENUS SUMMER 2025 PROFESSIONAL DEVELOPMENT

We are excited to share that registration for NESSP's 2025 Summer Professional Development is open! This year's focus will be the upcoming Companion Course: ROADS from Earth to Venus, centered around the guiding question:

"How can we use experiments, models, and NASA data to help us better understand both Earth and Venus and plan a successful mission to Venus?"

Who is this for?

The Northwest Earth and Space Science Pathways (NESSP) ROADS Professional Development is designed for both formal and informal educators who want to explore hands-on, standards-aligned, NASA-inspired lessons and activities. Whether you're new to ROADS or a returning participant, you're welcome to join!

What is the structure, time commitment, and support?

This Professional Development is designed to be flexible. It includes three 2-hour live sessions (see the schedule below). Participants may choose from multiple session options but must complete Sessions 1, 2, and 3 in order. The course also includes asynchronous work on a Canvas platform, to be completed before, between, and after the live sessions. Educators who complete all components will earn approximately 13 clock hours. Stipends and supplies are available for qualifying educators.

See the full schedule and register at:

<https://nwessp.org/professional-development-registration/>



NESSP PROFESSIONAL DEVELOPMENT LIVE SESSION 1 DATES

Register before your first 2025 Live Session on:

August 9th August 20th September 6th or September 17th

<https://nwessp.org/professional-development-registration/>